

WinEx DE™ and **WinEx Master™** provide the estimator the best possible excavation and grading takeoff software available. Since 1985, Roctek has taken the ideas and advice from over 6,000 of its users to enhance our takeoff products and keep them on the cutting edge of takeoff technology.

WinEx DE™ combines **WinEx™** & **eWinEx™** into one application. It is popular with GC's and big project management firms that want to do a quick dirt takeoff to get an idea of the scope of the project to check bids or put a number together in a hurry.

WinEx Master™ combines **WinEx Pro™** & **eWinEx Pro™** into one application. It's used by excavation companies moving the dirt. Being able to breakdown a job with more detail, **WinEx Master™** shows where there is money to be made or lost.

These programs were designed with one purpose in mind. To provide the estimator with a tool that produces accurate takeoffs

ROUTINES FOR :

- Topographical contour lines
- CAD Importing
- Pads & Trenching
- Retaining Walls
- Slopes
- Spot elevations
- Do Not Disturb Regions
- Geotechnical Information
- Site balancing
- Import/Export Grid Staking Map
- Multiple-plan jobs

ROCTEK PRODUCTS

WinEx Master™	eWinEx Pro™
WinEx DE™	SOFTakeoff™
eWinEx™	eSOFTakeoff™
WinEx Pro™	WinScale™
WinEx™	Presto™

- Supports PDF, TIF, JPG, GIF, BMP, DXF and much more
- Export Data to MS Excel™ or any Windows based application
- Increased accuracy, up to 80% faster than manual takeoff methods

Site and Region Striping

Spot Elevations

Topographical Contour Lines

Subgrade Material Library

Strata Cut Maps

3-D Color Output

Overlapping Report Regions

Spot Elevations

Flat Pads

Custom Formula Generator

Site and Region Balancing

Slope Routines

Strata Cut & Fill Breakdown

Multiple Job Phases

Grid Staking Map Import/Export

On-site Trenching

Fully Integrated CAD Importer

WinEx Master™ Only



On Screen Ability

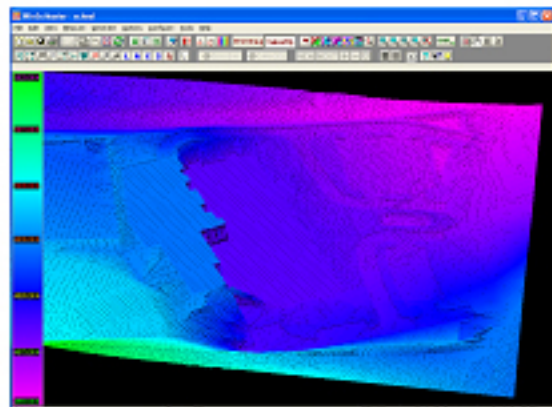
Supports any PDF, TIF, JPG, BMP, DWG, & more

Digitizer Ability

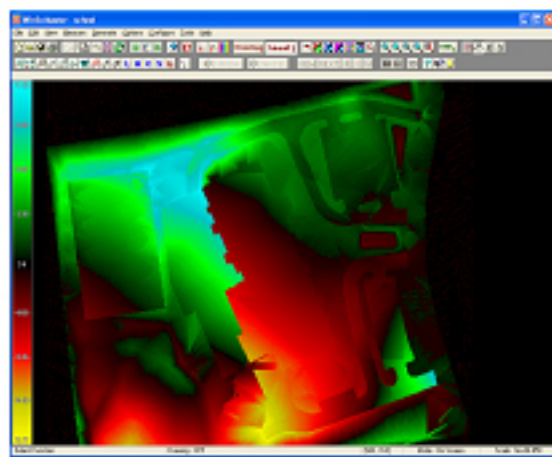
Supports Paper Plans



www.ROCTEK.com **PHONE: 800-826-7763** **FAX: 850-994-2283**



3D Elevation Shading



Cut and Fill Imaging



On Screen Sitework Takeoff



Professional Reports

Built-in Routines

Measure Routines	Description
Topo Lines	The Topo Lines feature is designed for entering contours from the plans. You may enter existing or proposed (final) contours.
Connected Spots	The Connected Spots feature is designed for entering spot elevations from the plans.
Flat Pad	The Flat Pad input allows you to specify any area as being at a fixed elevation. This is useful for building pads and other areas, particularly when these areas are adjacent to one another.
Strata	Input core samples directly from the engineers notes to accurately determine where and how much cut of different strata layers you will encounter on your job.
Slopes	A slope region consists of two parts: a slope base and a slope boundary. A "Cut Slope" will generate cut only (will daylight when proposed gets to existing). A "Fill Slope" will generate fill only. A "Simple Slope" will generate a sloped plane throughout the region.
Trench	The Trench function is used to quickly and accurately calculate the amount of excavation and materials needed to lay pipe, footings, or other items that require a trench. you can either create a trench template, select a predefined template, or modify a predefined template. Choose a predefined template from the Trench Name pull-down, or enter a name for a new trench. Then, modify any of the parameters to match your trench layout: hinge height, slope, bench width, and bottom width.
Vertical Wall	The Wall feature is designed for entering shear elevation changes from the plans, such as cliffs or retaining walls.
Unchanged Region	The Unchanged Region feature is designed for specifying areas to remain undisturbed on the site.
Work Region	The Work Region feature is designed to allow the user to identify unique characteristics for any area on the site. In addition, individual cut/fill and area calculations are available for any work region defined.
Grid Staking Map	The Grid Staking Map button toggles on or off the grid staking map over the input information
Cross Section Slice	The View Cross-Section speed button generates a two-point cross-section anywhere on site. This is a fast method of viewing sections; simply touch the left and then the right edge of the cross-section to view.
Strata Map	The View Strata Map button will display a multicolored map depicting which Strata Layer the Proposed (Final) Layer is in.
Elevation Shading	The View Elevation Shading button will display a multicolored shaded map using different shades to represent elevations on the existing or proposed surface
Custom Formulas	This feature allows you to calculate more complex quantities than simple lengths, areas or counts. The formula feature is designed to allow you to apply an equation to a basic measurement and generate numerous answers based upon user entered variables
Alternate Plan	This feature allows you to use multiple blueprints or drawing images in a single takeoff