

SOFTScale™

Digitizerless and Onscreen
Takeoff for Construction

SOFTScale™ can provide solutions for concrete, framing, roofing, flooring, drywall, interior design and practically any other building trade.

SOFTScale™ is fast, stable and time-tested. Thousands of customers rely on Roctek to improve accuracy, save time and win bids.

SOFTScale™ lets you export your quantities to any Windows application, spreadsheet, or estimating program such as Excel.

SOFTScale™ uses the latest technology allowing the import of a wide variety of file types.

SOFTScale™ measures areas, lengths, separate line segments and counts items.

Routines for :

- FRAMED AND CONCRETE WALLS
- FLOOR AND CEILING JOISTS
- CARPET ROUTINES
- REBAR AND VAPOR BARRIER
- INTERIOR QUANTITIES
- ROOFS HIPS & VALLEYS
- SLABS AND FOOTINGS
- CIRCULAR AND RECTANGULAR COLUMNS
- WINDOWS, DOORS, AND COUNTS

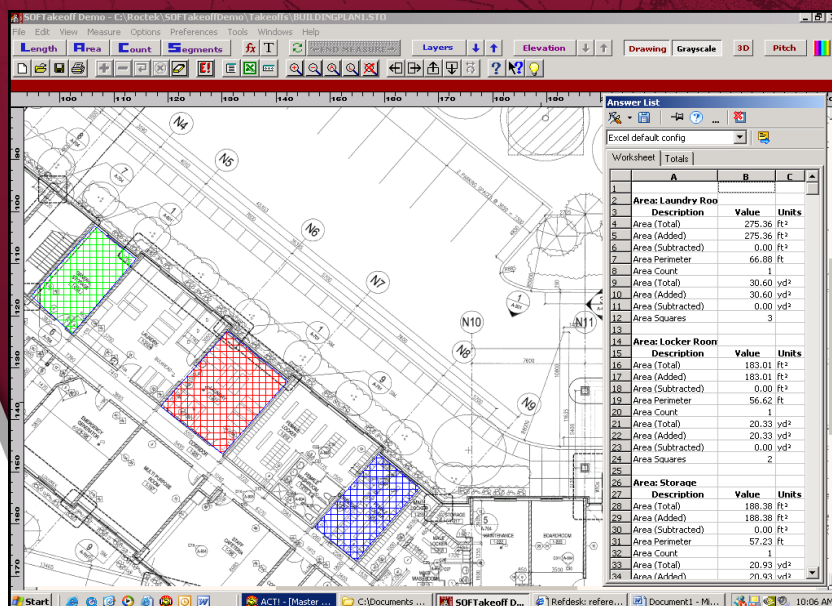
See It In Action - Call Today
800-826-7763

ROCTEK

INTERNATIONAL

Dual-Mode Technology

- New SMARTPlot™ Technology allows Increased Accuracy and Zoom Control for fast, accurate, takeoffs
- No Digitizer to purchase or use
- Easy to learn - productive in less than an hour
- Advanced Roof Routine calculates Hips, Valleys and Beams “buy-lengths” and more
- Wall Routines for both Framed and Concrete walls
- Ceiling and Floor Tile
- Circular and Rectangular Columns
- Floors, Carpets, Slabs, Footings, Dry Wall and more
- Read DXF, DWG, PDF, TIFF, JPEG, BMP and many others
- Easily placed “Floating” Ruler calibrated to scale
- Export to any Windows based Spread Sheet Application

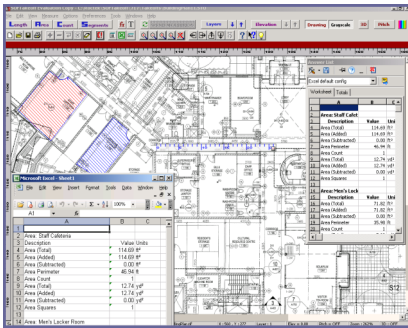


ROCTEK

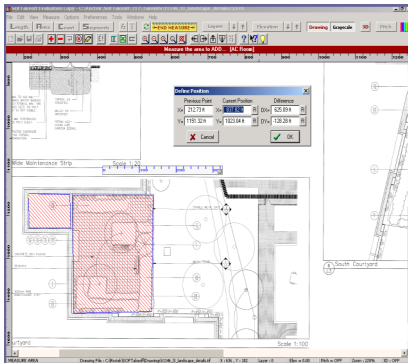
INTERNATIONAL

www.roctek.com

Onscreen and Digitizer Solution



- **Reads CAD, PDF, BMP, TIFF, JPEG, DJVU** and a host of other file formats
- **ROCTEK's exclusive "Measure Routines"** will save the estimator 80% in time over manual methods
- **SMARTPlots™**, our proprietary editing functions allow the estimator complete control over each takeoff without redoing your work



ROCTEK PRODUCTS

WinEx Master™

WinEx Grade™

SOFTScale™

SOFTScaleLT™

RoadEx™

SOFTScale Built-in Routines

Measure Routines	Description
Length	The Length command allows you to measure the length of continuous line segments on the plans—straight or curved.
Area	The Area command allows you to measure the enclosed area and perimeter length of regions on the plans.
Count	The Count Units command allows you to quickly count the number of units of an item on the plans
Separate Lengths	The Separate Lengths command allows you to quickly measure the total length of separate straight line segments on the plans
Carpet	The Carpet command will calculate the length of carpet roll, perimeter, and area of carpet needed for different carpet sections
Ceiling Tile	The Ceiling Tile command is used to calculate the number of ceiling tiles, runners, and spanners used in a given area
Floor Tile	The Floor Tile command is used to calculate the number of floor tiles used in a given area.
Floors	The Floor routine will calculate the number of joists, the beam lengths, and the areas of the different floor sections.
New and Improved! Roofs, Hips, Valleys	The Roof routine will calculate the number of rafters, beam lengths, hip & valley lengths and the areas of the different roof sections
Slabs	The Slab command will calculate the perimeter, area, and volume of the slab, the volume and weight of the bases beneath the slab, the number of rolls of vapor barrier and wire mesh, and the length and weight of rebar used in the slab.
Framed Walls	The Framed Wall command is used to calculate the volume, surface area, length, number of studs, and the pieces of covering for a wall section.
Concrete Walls	The Concrete Wall command is used to calculate the volume, surface area, wall length, length and weight of rebar, and the pieces of forming panels for a wall section.
Rectangular & Circular Columns	The Rectangular or Circular Column command is used to calculate volumes, areas, and total length of vertical and hoop rebar used in a rectangular or Circular concrete columns
Boxes, Rectangles and Cylinders	Command used to calculate the volume and areas for a box, rectangle or cylinder
User Configured Formulas	This feature allows you to calculate more complex quantities than simple lengths, areas or counts. The formula feature is designed to allow you to apply an equation to a basic measurement and generate numerous answers based upon user entered variables

(800) 826-7763 **WWW.ROCTEK.COM**
5823 Highway 90, Milton, FL 32583

ROCTEK
INTERNATIONAL